

Hudson River PCBs Superfund Site



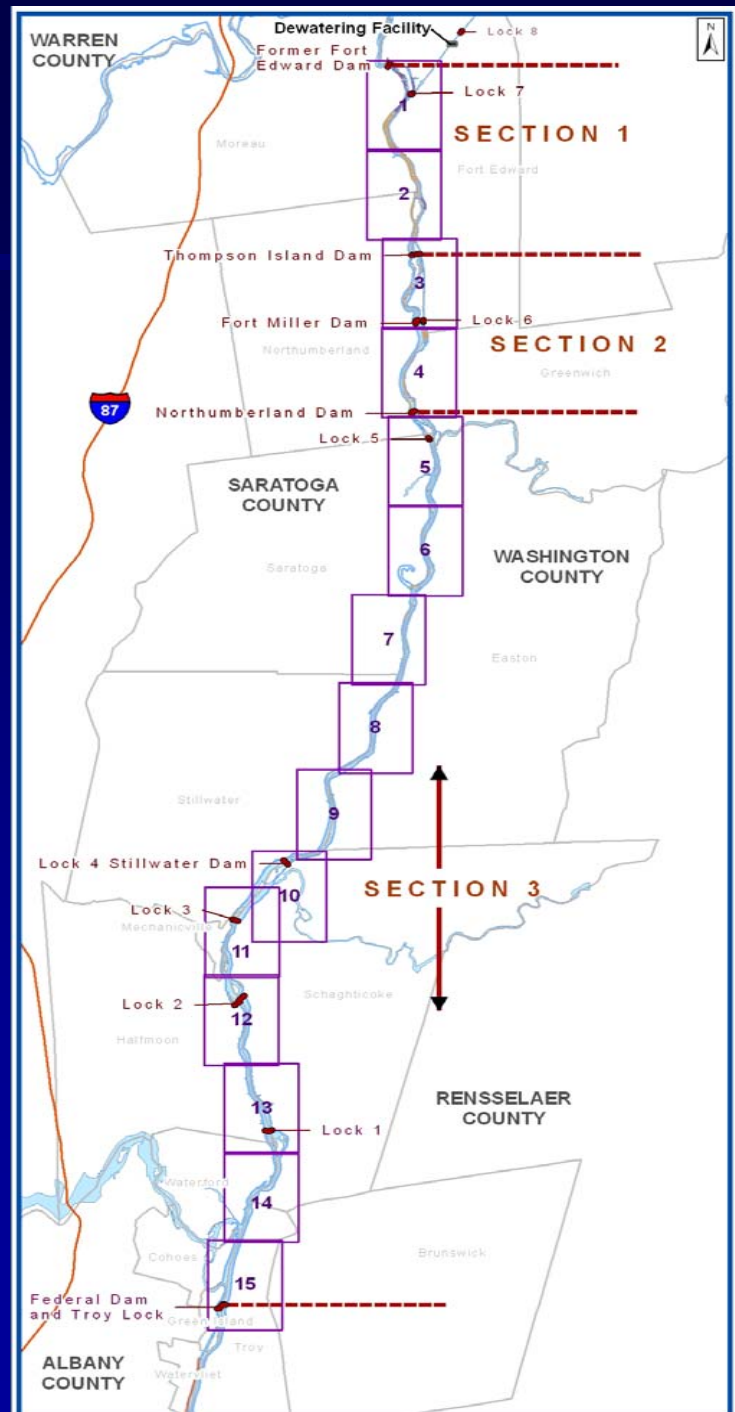
Community Advisory Group Meeting

March 27, 2008

Dredge Area Delineation Phase 2

LEGEND

-  Hudson River
-  Upper Hudson River Sections
-  Lock/Dam
-  Dredge Areas Phase 1
-  Dredge Areas Phase 2



Phase 2 Dredge Area Delineation

- Based on more than 50,000 sediment samples (since 2002), sampling data allowed EPA and GE to:
 - determine the distribution of PCBs in the sediment
 - refine estimates of the amount and location of PCBs in the sediment
 - establish river sediment characteristics (e.g., silt, sand, gravel)
- 400 acres to be dredged (490 acres total)
- Overall typical depth 3 ft (some areas extend to 5 ft or more)
 - Contaminated sediments are not as deep as was estimated during the ROD

Dredging Areas by Project Phase

Table 2 Comparison of ROD Estimates and Current Design Targets by Project Phase

	ROD Estimates		Design Targets	
	Volume of Sediment (cy)	Mass of PCB (kg)	Volume of Sediment (cy)	Mass of PCB (kg)
Phase 1	150,000–300,000	---	263,600	20,300
Phase 2	2,350,000–2,500,000	---	1,531,400	92,800

ROD Estimate - 2,650,000 cy/70,000kg PCBs

Design Targets - 1,795,000 cy sediment/113,000 kg PCBs

Dredging by River Sections

- **River Section 1**
 - Fort Edward Dam to the Thompson Island Dam
- **River Section 2**
 - Thompson Island Dam to the Northumberland Dam
- **River Section 3**
 - Northumberland Dam to the Federal Dam at Troy

Dredging Estimates by River Section

Table 1 Comparison of ROD Estimates and Current Design Targets by River Section

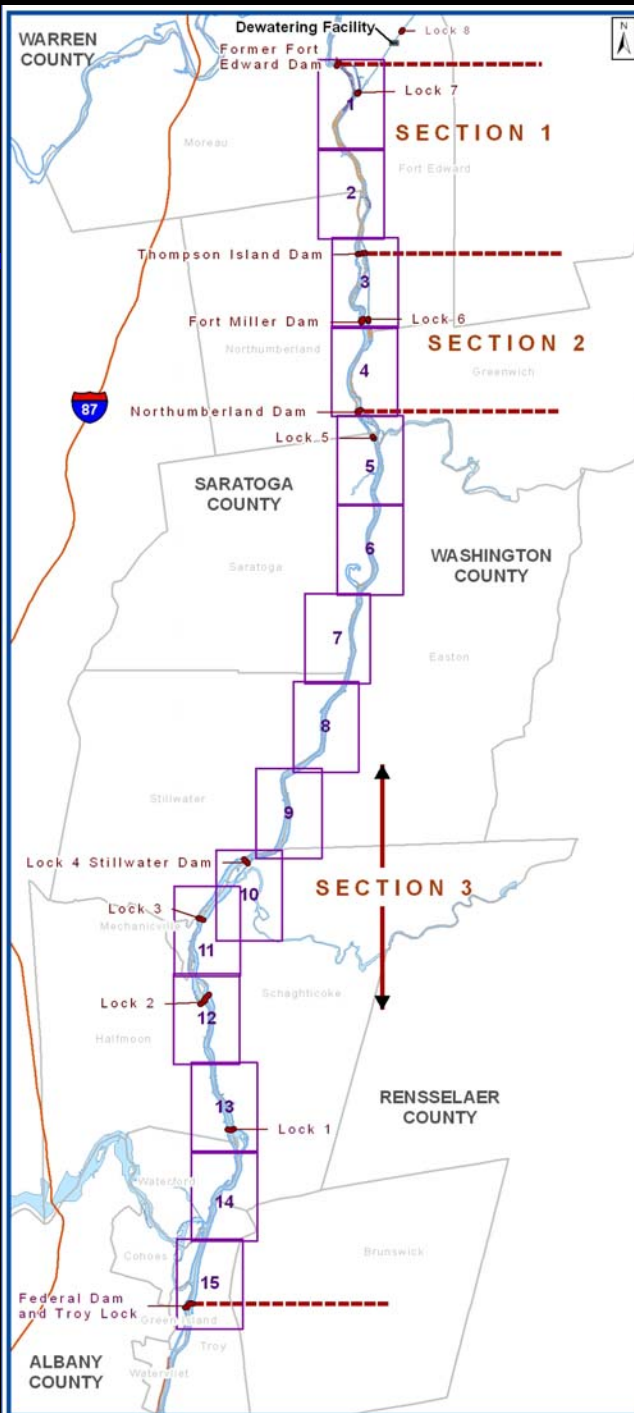
	ROD Estimates		Design Targets	
	Volume of Sediment (cy)	Mass of PCB (kg)	Volume of Sediment (cy)	Mass of PCB (kg)
River Section 1	1,492,000	36,000	939,800	60,600
River Section 2	565,000	23,600	364,000	28,500
River Section 3	393,000	6,700	491,000	24,000

ROD Estimate - 2,650,000 cy/70,000kg PCBs

Design Targets - 1,795,000 cy sediment/113,000 kg PCBs






Additional Dredge Area Delineation Information

- **Public input will be considered while moving ahead with Phase 2 design**
- **Dredge areas may be adjusted during design to account for underwater structures (e.g., pipes), protection of habitats and cultural artifacts, and other design considerations**
 - **changes will be included in the Phase 2 Design Reports**
- **Some additional sampling needed to fill data gaps (including along the shoreline); to be conducted in 2008, results to be incorporated into the Phase 2 Design**



Map Index Dredging Areas Phase 2

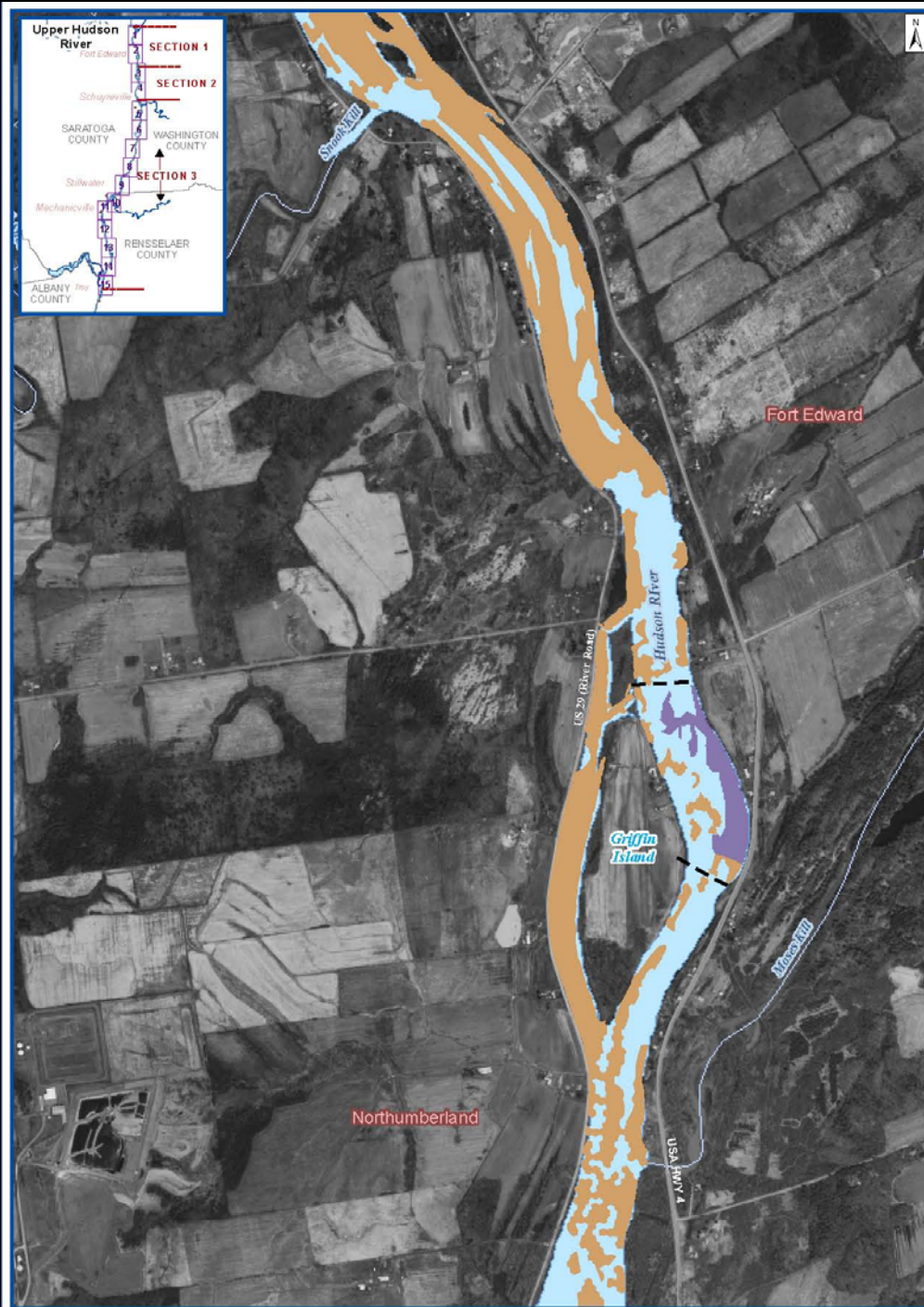
LEGEND

-  Hudson River
-  Upper Hudson River Sections
-  Lock/Dam
-  Dredge Areas Phase 1
-  Dredge Areas Phase 2

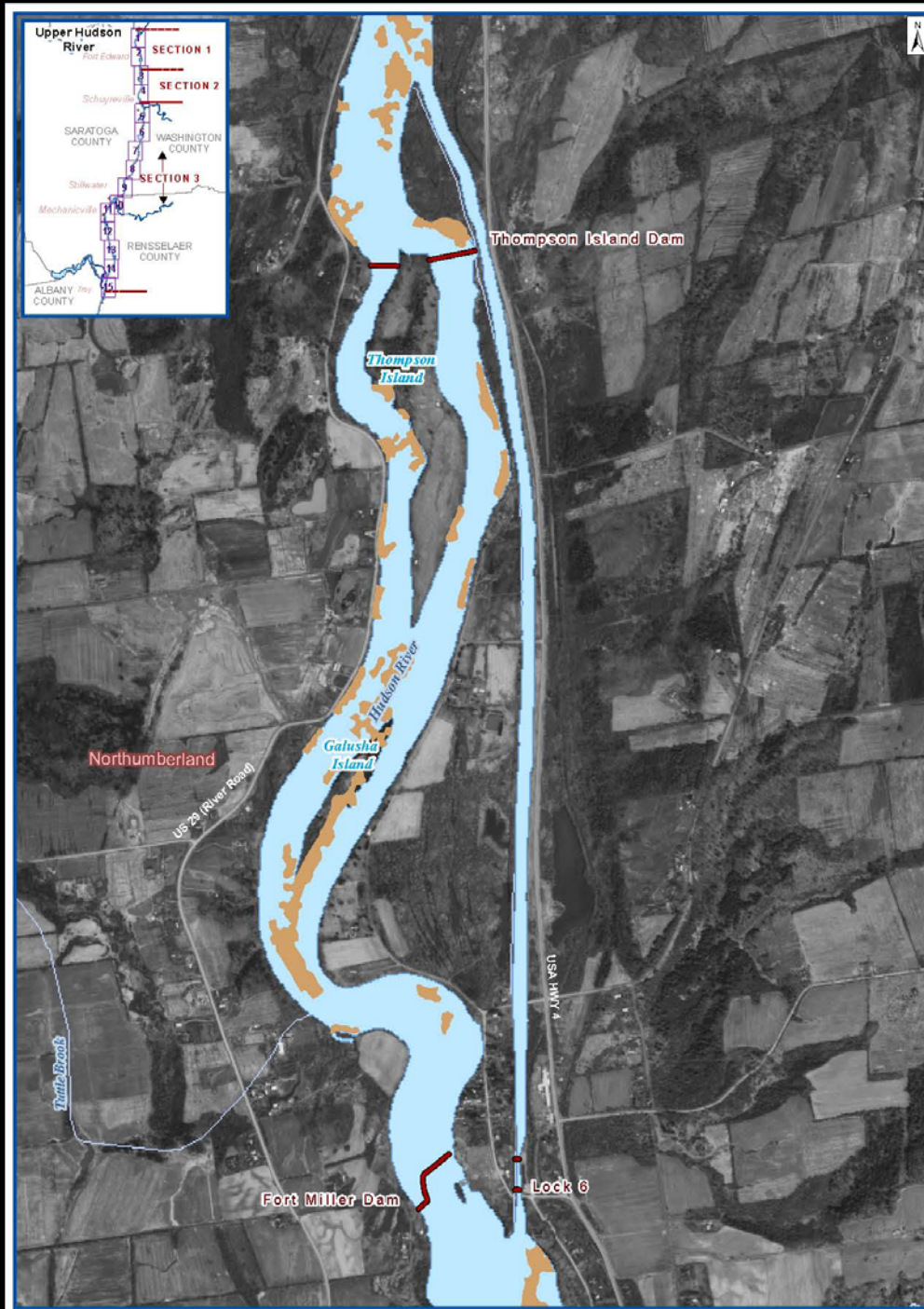
Map 1



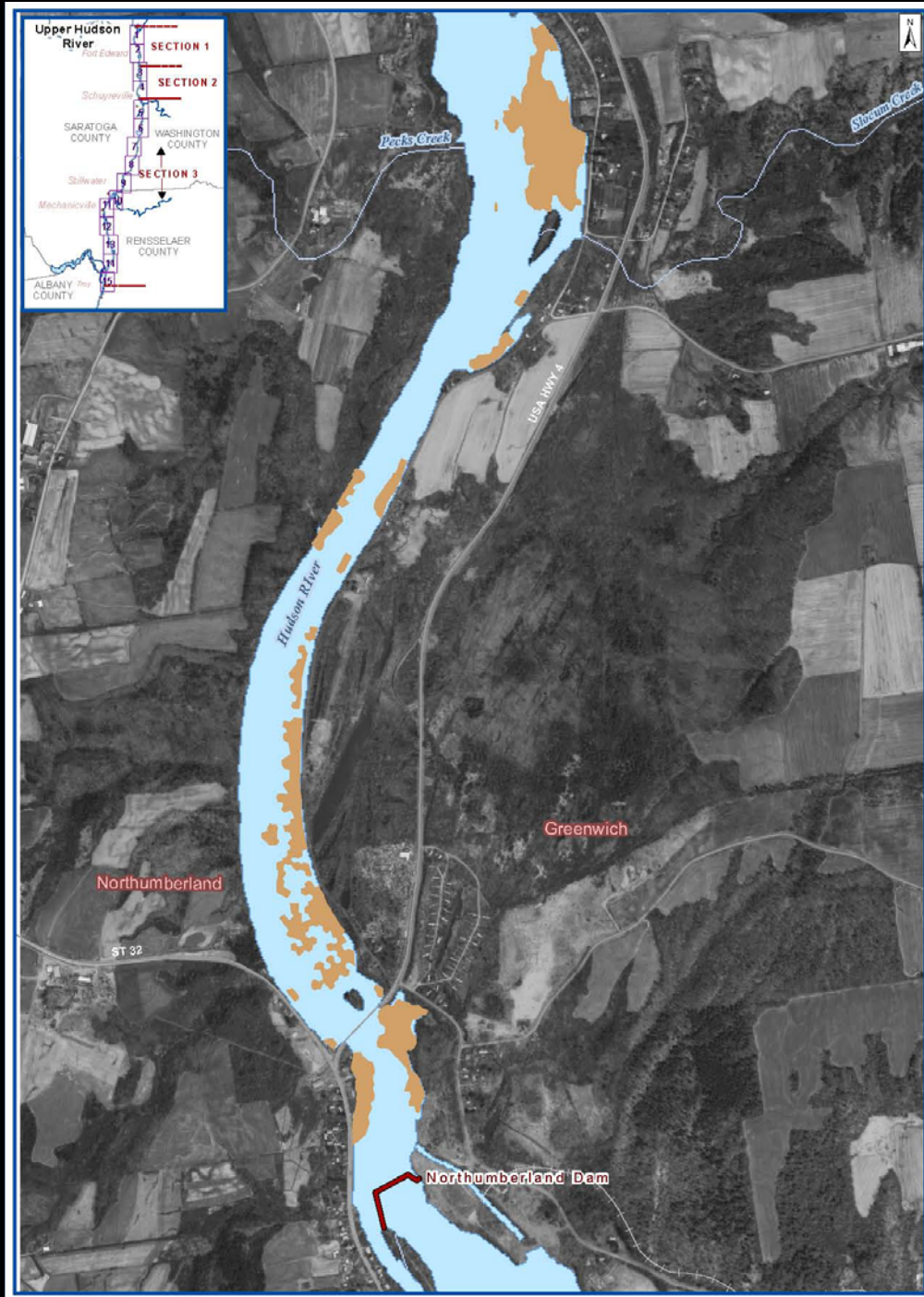
Map 2



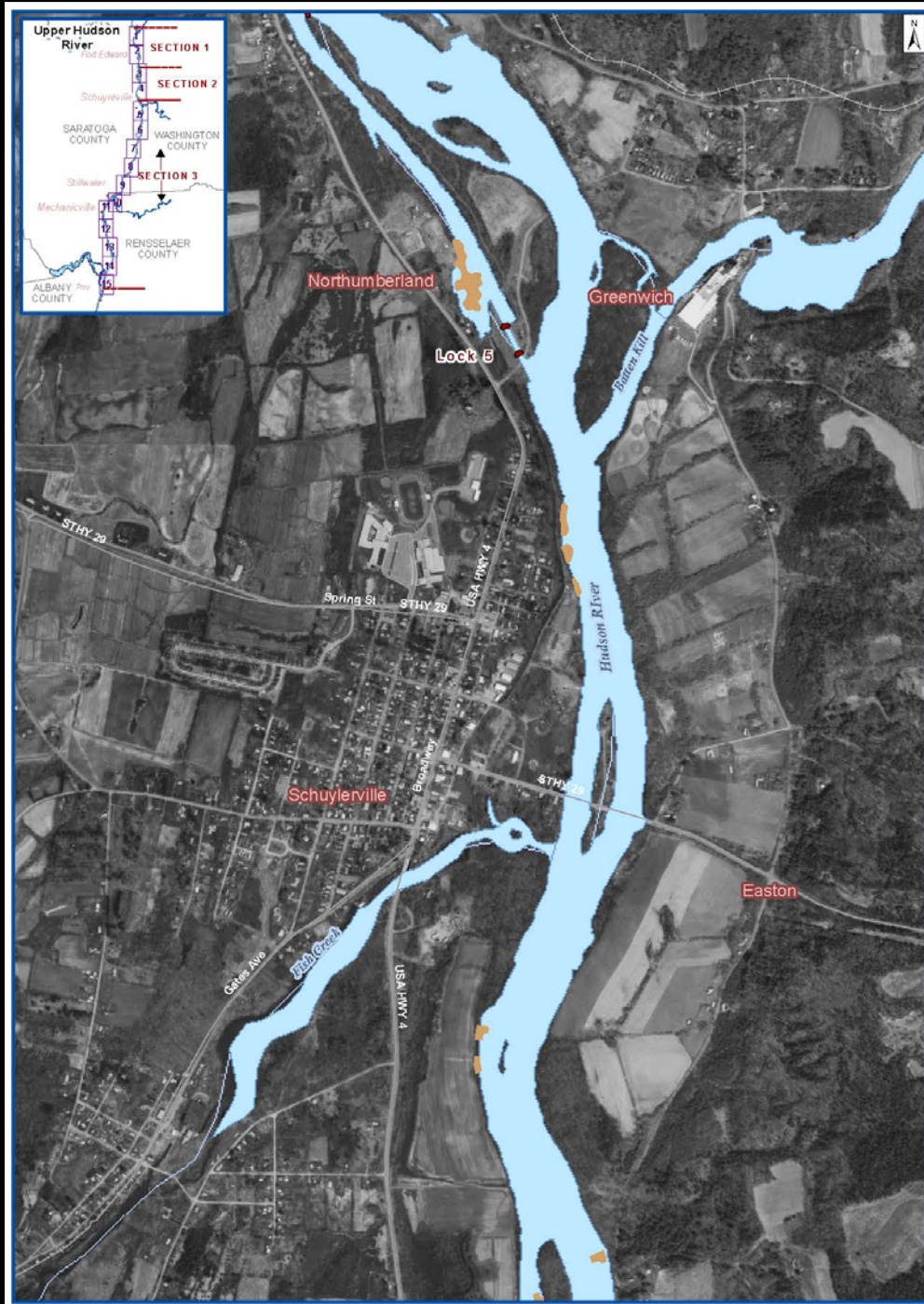
Map 3



Map 4



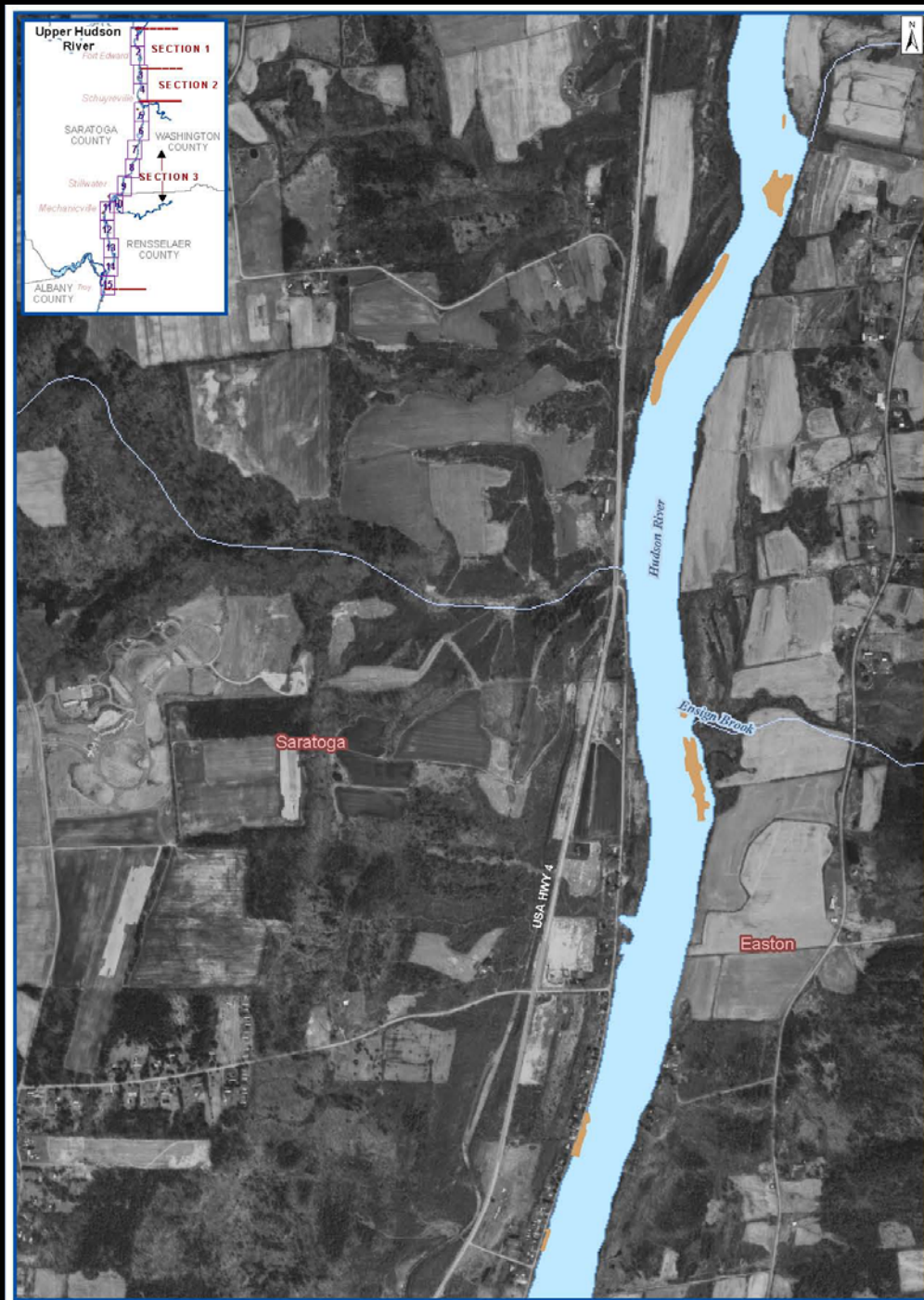
Map 5



Map 6



Map 7

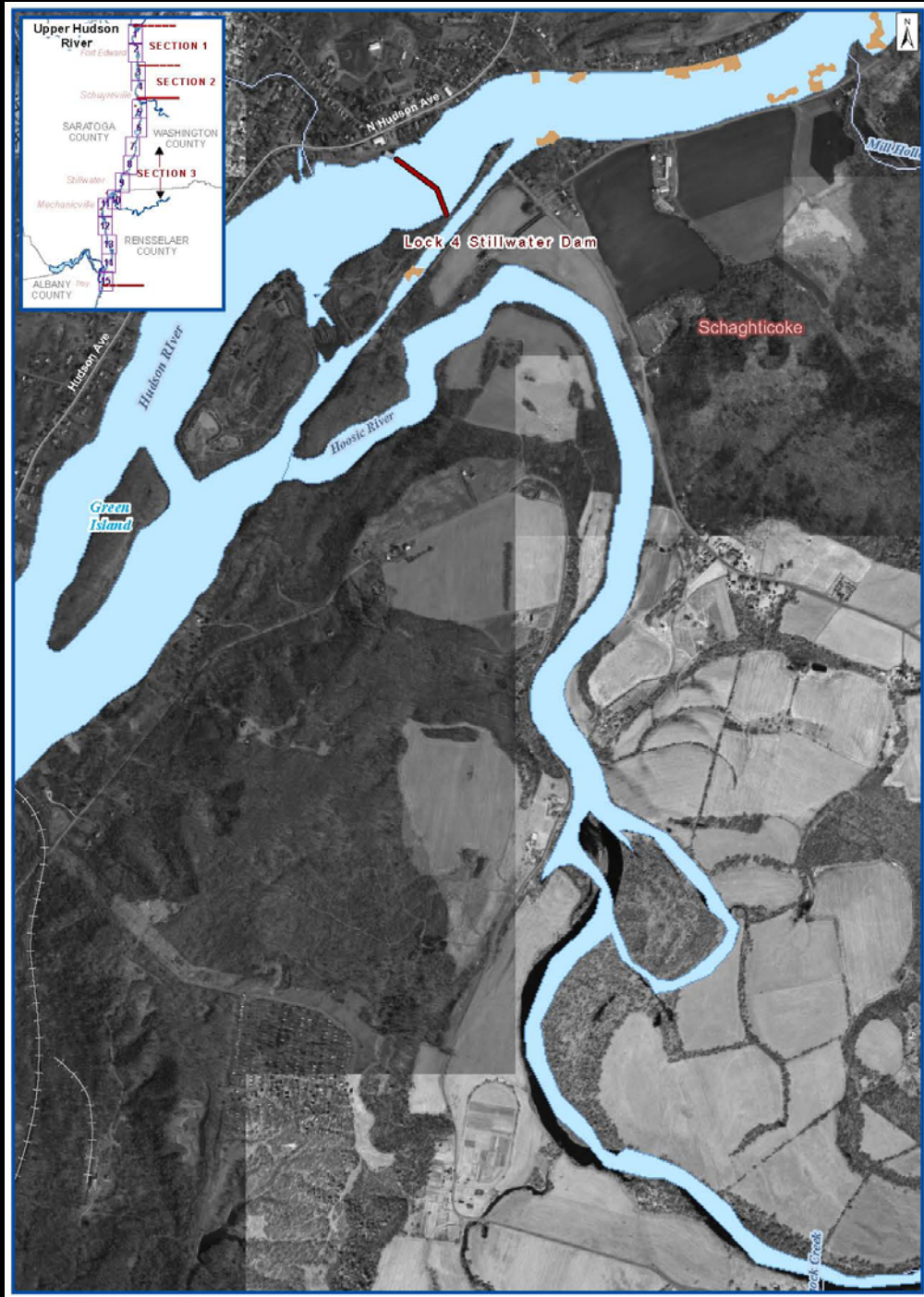


Map 8



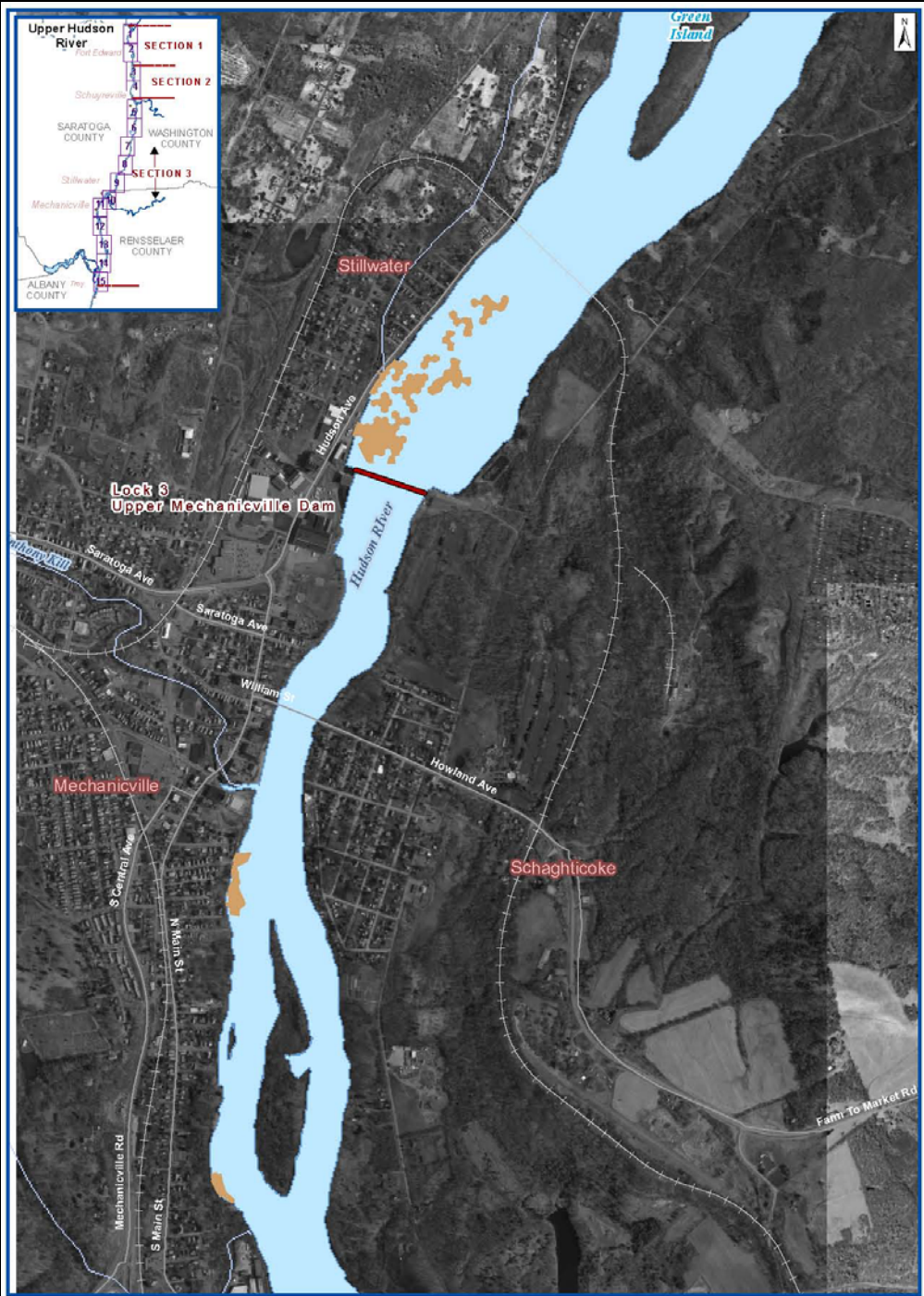


Map 9

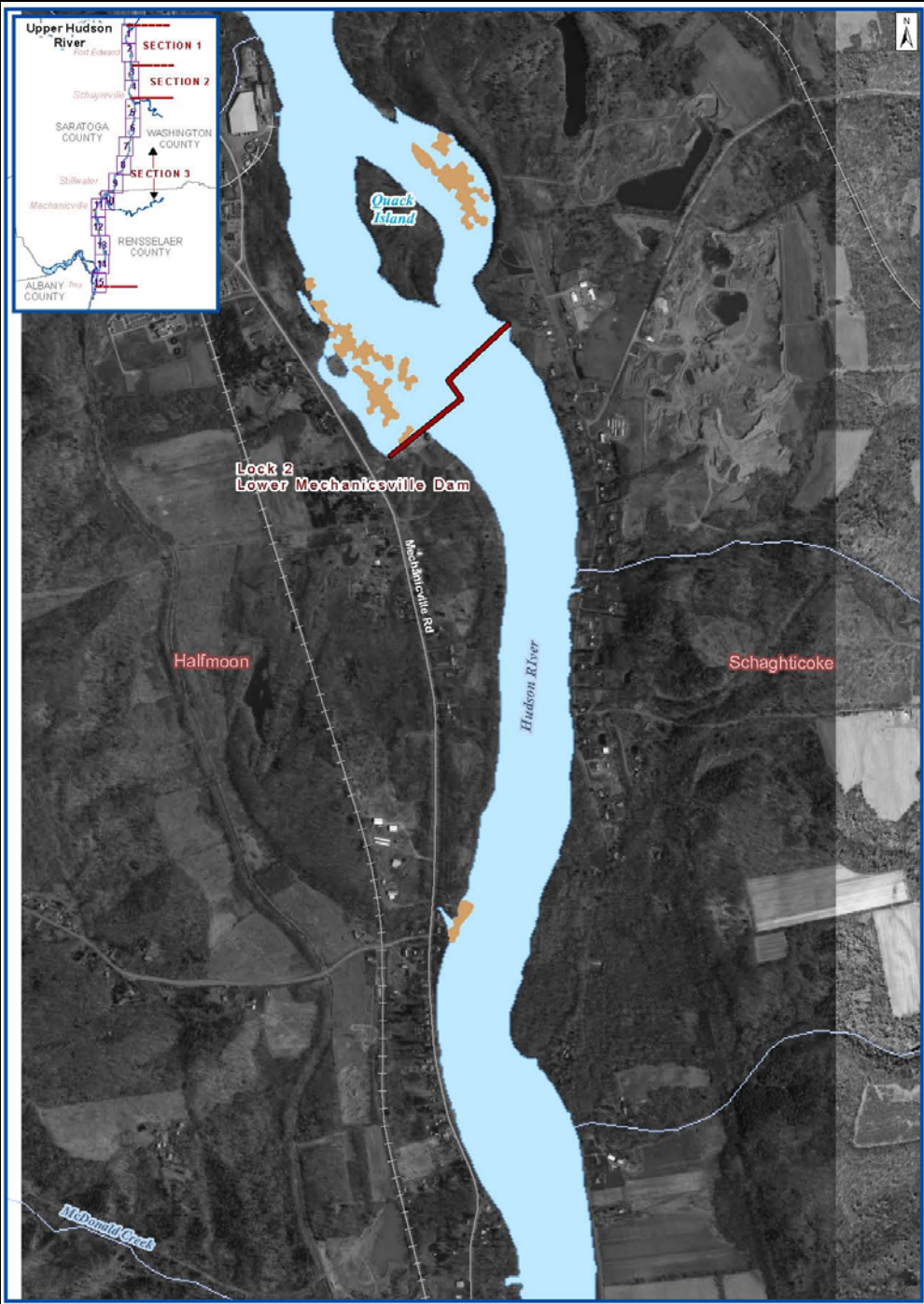


Map 10

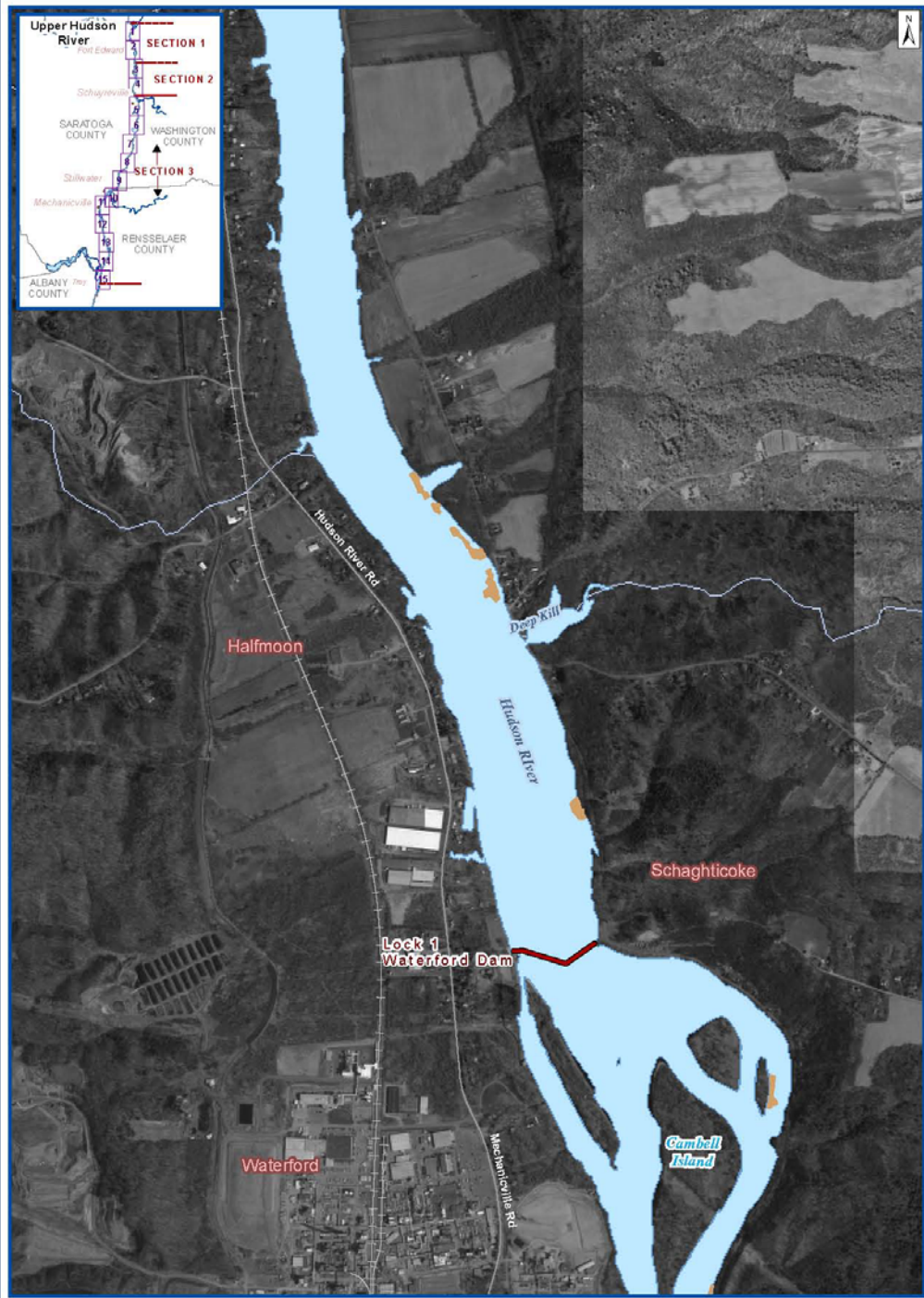
Map 11



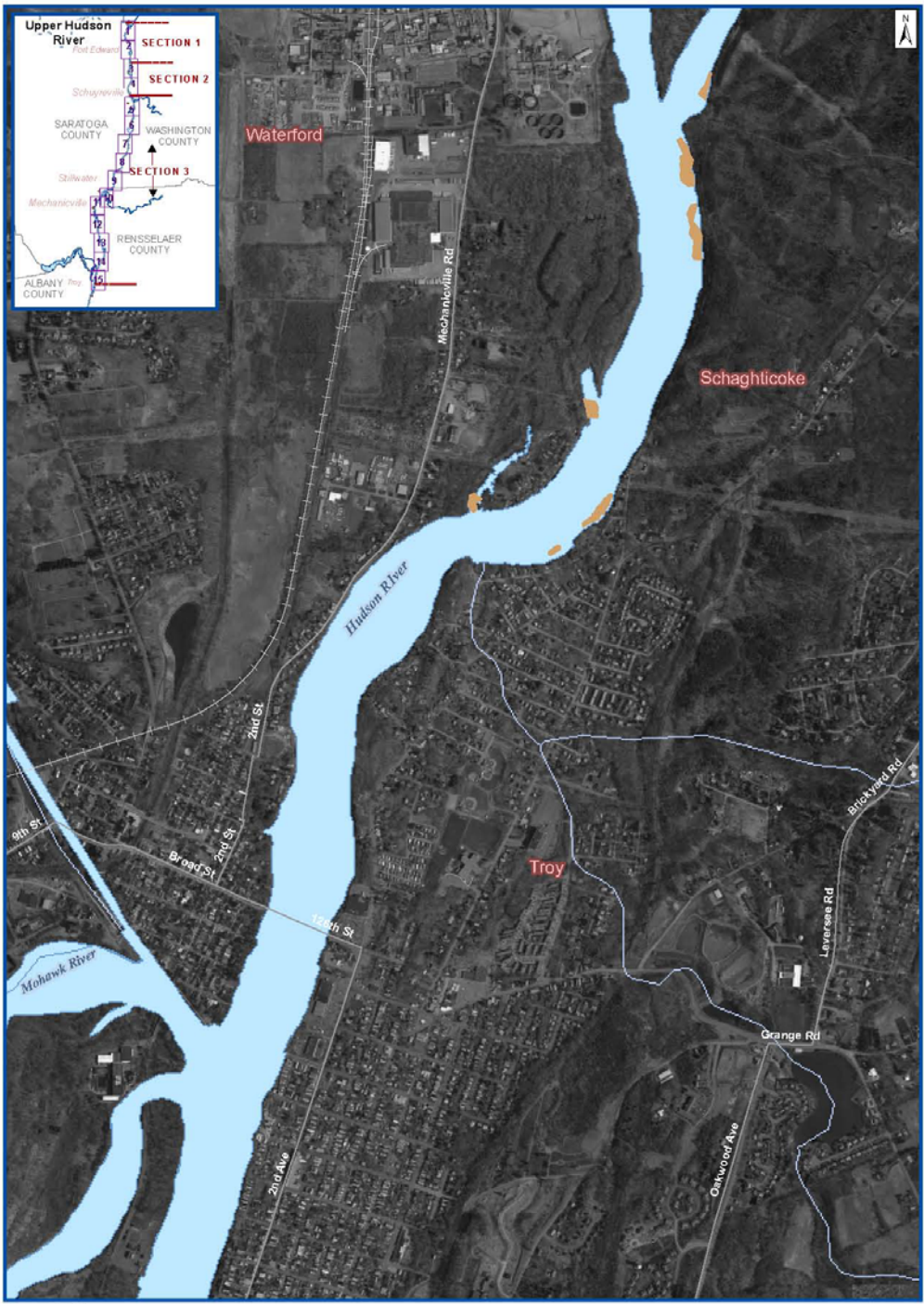
Map 12



Map 13



Map 14



Map 15



EPA Contacts

- **Dave King**
Director
Hudson River Field Office
421 Lower Main Street
Hudson Falls, NY 12839
(518) 747-4389
king.david@epa.gov
- **Kristen Skopec**
Public Affairs Specialist
Hudson River Field Office
421 Lower Main Street
Hudson Falls, NY 12839
(518) 747-4389
skopec.kristen@epa.gov
- **Fact Sheets available**

Questions / Comments

